

TTB-EC180.012 - TTB-EC180.024 - TTB-EC180.024-2W

Eigenschaften

Construction	Tubular, without fan
Size	Ø 80 mm
Power	250 W S2 (180 W S1)
Magnets	2
Bearings	Ball bearings
Mounting holes	4
Power supply	Low voltage, 12 or 24 Vdc
Brushes	2 inside brushes made of graphite/copper composite
Brushes size	LxPxH = 17.1 x 6.5 x 16.7 mm
Electric cable	Length: 1000 mm
Rear shaft	Standard only TTB-EC180.024-2W

Typo Type	S	Pn [W]	V [V]	I [A]	IC	FF	Mn [Nm]	n ₁ [min ⁻¹]	IP	Kg	
EC180.012	S1	180	12	21.5	F	1	0.57	3000	40	3.4	
	S2 25%	250		30			0.8				
EC180.024	S1	180	24	10.8			0.57				20
	S2 25%	250		15			0.8				
EC180.024-2W	S1	180		10.8			0.57				
	S2 25%	250		15			0.8				

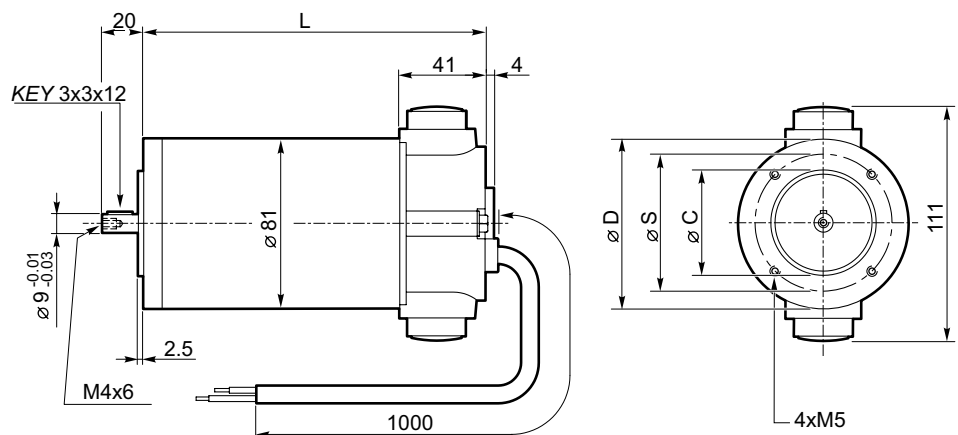
Abmessungen

EC180.012

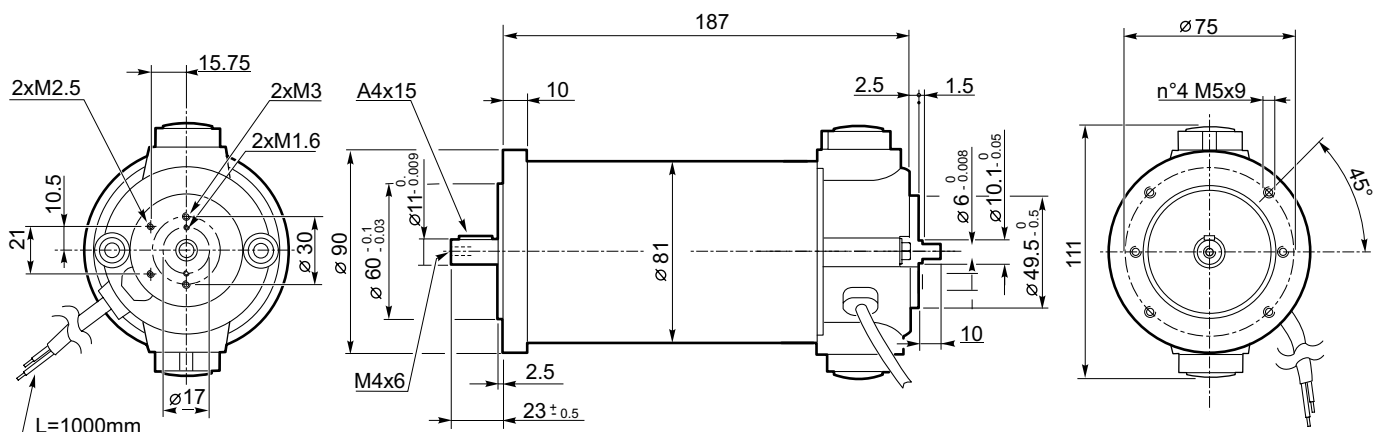
EC180.024

56 B14	
L	185
D	80
S	65
C (-0.03 / -0.01)	50
63 B14	
L	187
D	90
S	75
C (-0.03 / -0.01)	60

* Use sleeve 9/11



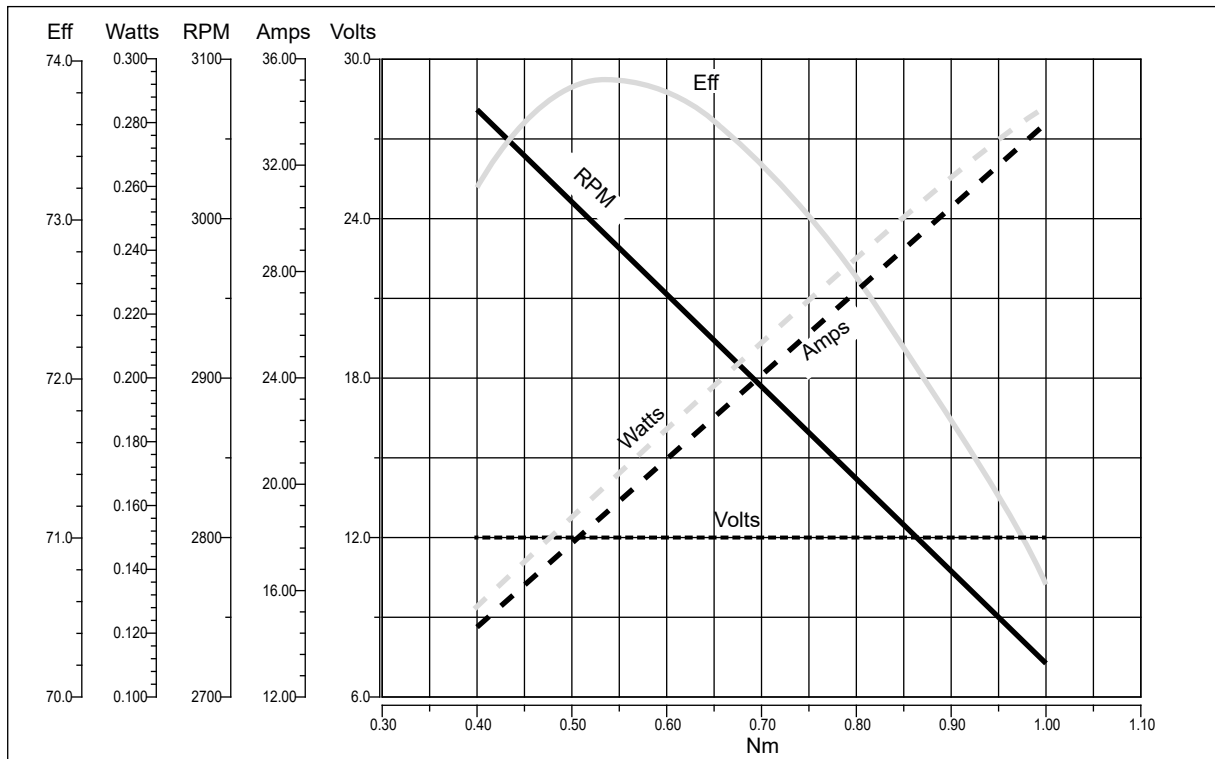
EC180.024-2W



TTB-EC180.012 - TTB-EC180.024 - TTB-EC180.024-2W

Performance

TTB-EC180.012



TTB-EC180.024

